

STARK COUNTY SYSTEM OF CARE EXPANSION PLANNING

FEBRUARY 27, 2015

WHAT'S NEW WITH THE STARK COUNTY SYSTEM OF CARE?

INSIDE THIS ISSUE:

WHAT'S NEW WITH THE STARK COUNTY SYSTEM OF CARE? 1

CULTURAL COMPETENCE 2

TRAUMA-INFORMED CARE 2

SOCIAL MARKETING 2

FAMILY EMPOWERMENT/ YOUTH AND YOUNG ADULT 3

PREVENTION/ TREATMENT 3

MEET THE CORE EXPANSION LEADERSHIP TEAM 4



Welcome to our new monthly e-newsletter! The Mental Health and Recovery Services Board (MHRSB) of Stark County will issue an update every 4th Thursday of the month about what is happening here in Stark County with our System of Care Expansion Planning Grant.

What is the System of Care Expansion Planning Grant?

MHRSB has been awarded a one-year Planning Grant for the Expansion of the

Comprehensive Community Mental Health Services for Children and their Families by the Substance Abuse and Mental Health Services Administration (SAMHSA), Center for Mental Health Services. This grant is being used to involve youth, families, child and family organizations, and the community in creating a culturally and trauma-informed comprehensive strategic plan (or map of coordinated services and supports) for children, youth,

and families with or at risk for mental health challenges in Stark County.

What is a System of Care?

Youth, families, and the community coming together to assist youth with behavioral health issues and their families by:

1. Improving the existing services available to them.
2. Improving access to these services.
3. Expanding services to reflect their cultural, racial, ethnic, and linguistic needs.

GRANT LEADERSHIP

Grant Director:
Patti Fetzer

Grant Coordinator:
Jessica Zavala

Grant Facilitator and Evaluator:
The College of Public Health at Kent State University

Local Cultural Competence Consultant:
Remel Moore

Young Adult Consultant:
Joy Raub

Trauma-Informed Care Lead:
Stephanie Kutcher

RECENT AND UPCOMING PLANNING EVENTS

Recent	February 17	March 12	March 19 (3:30-5:00 PM)
January 26 "Culture and Trauma" Webinar- National Council for Behavioral Health	Webinar on Domain 6: "Creating Community"- National Council for Behavioral Health	Cultural Competence Subcommittee Information Distribution	First Prevention and Resiliency Subcommittee Meeting
February 9 Cultural Competence Visioning and Action-Planning Forum- Georgetown National Center for Cultural Competence	Upcoming March 12 (1:45-4:45PM) Ethics and Cultural Competence presentation at the MHRSB Annual Conference*	March 13 Premiere of Social Marketing videos at the MHRSB Annual Conference	March 26 (3:30-5:00 PM) Youth and Young Adult Leadership Meeting
		March 5 (3:30-5:00PM) Social Marketing E-Kickoff! First Treatment Subcommittee Meeting	April 1 (11:30-1PM) Cultural Competence Webinar on National Standards for Culturally and Linguistically Appropriate Services in Health and Healthcare

*Fees may apply

CULTURAL COMPETENCE

The MHRSB is excited to have already begun the planning efforts with the nationally recognized Georgetown National Center for Cultural Competence, along with the Executive Director of Coming Together Stark County to improve and promote Cultural Competence and CLAS standards in the following six domains:

- 1. Governance and Organizational Infrastructure

- 2. Services and Supports
- 3. Planning and Continuous Quality Improvement
- 4. Collaboration
- 5. Communication
- 6. Workforce Development

We look forward with their expertise of exploring and defining Cultural Competence on the macro and micro level, both in policy and practice, and as a part of services within Stark County's System of Care. Cultural Competence within a System of Care is defined as:

"the integration of knowledge, information, and data about individuals and groups of people into clinical standards, skills, service approaches and supports, policies, measures, and benchmarks that align with the individual's or group's culture and increases the quality, appropriateness, and acceptability of healthcare and outcomes" (Technical Assistance Partnership for Child and Family Mental Health, Cross et al., 1989).

Pictured (from left to right) is Jessica Zavala and Stark State College student, Carole Jivens at the Cultural Competence Visioning and Action-Planning Forum on February 9th.



Upcoming events with Georgetown includes an onsite planning strategy in May to address reducing and eliminating disparities in Behavioral Health.

TRAUMA-INFORMED CARE

Thirteen organizations have applied to join the National Council's Trauma-Informed Care Learning Community, and will work directly with the National Council on becoming more trauma-informed. Those organizations are: Coleman Behavioral Health; Phoenix Rising Behavioral Health & Recovery, Inc.; Stark County TASC; Community Services of Stark County; Child & Adolescent Behavioral Health; Lifecare Family Health &

Dental Center; Domestic Violence Project, Inc.; Crisis Intervention and Recovery Center, Inc.; Stark County Family Court; Stark County Job & Family Services; Stark County Board of Developmental Disabilities; Stark Social Workers Network; and The Mental Health and Recovery Services Board of Stark County.

The National Council will utilize their assessments and tools to measure each organization's progress in

improving the seven domains of Trauma-Informed Care.

If anyone is interested in joining the Trauma-Informed Care Learning Community, and their organization is one of the 13 that already applied, they can consult internally with their organization.

Thirteen Stark County organizations are currently working with the National Council to become more trauma-informed.

SOCIAL MARKETING



MHRSB is very excited to announce a partnership with local media company,

Bumble Media, to produce a video about Stark County's System of Care Expansion Planning process. The purpose of this video is to encourage feedback from Stark County

youth and family members in order to identify gaps within the current System. Bumble Media is owned and operated by Wade Clark, a University of Mount Union (UMU) student, and Josh Clemence, a marketing graduate of UMU (2014).

MHRSB is also pleased to announce Alliance High

School's participation in this planning process. Students of this school are producing a video that explains the Expansion Planning subcommittees in detail.

Both of these videos will premier at the MHRSB Annual Conference on March 13, 2015, and will be distributed via email the following day to prospective System of Care Expansion Planning participants.



Wade Clark
Video Production Specialist



Josh Clemence
Creative Marketing Analyst

FAMILY EMPOWERMENT*YOUTH AND YOUNG ADULT

Family Empowerment

This subcommittee focuses primarily on incorporating the voices of family members of youth and young adults with or at risk for mental health challenges in Stark County who can advocate for their own needs in the System of Care. Participants will be asked for input on ways to 1) better engage family members in decisions involving their care 2) involve family members in planning activities for the expansion of the System of

Care, and 3) ensure family members have a voice about the services provided to them.

Youth and Young Adult

This subcommittee focuses primarily on incorporating the voices of youth and young adults with or at risk for mental health challenges in Stark County who can advocate for themselves and their needs. Participants will be asked for input on ways to 1) better engage youth and young adults in decisions involving their care 2) involve youth in planning

activities for the expansion of the System of Care, and 3) ensure youth have a voice and choice in the services and supports provided to them.

Lastly, this subcommittee will organize resources and materials that may assist stakeholders in creating, revising, and/or updating youth and family engagement strategies for their respective organizations.

PREVENTION AND RESILIENCY*TREATMENT

Prevention

This subcommittee focuses primarily on creating improved prevention and resiliency strategies for youth with or at risk for mental health challenges and their families in Stark County. Participants will be asked to help develop strategies to 1) develop a complete System of Care that addresses the prevention, promotion, and

resiliency of mental health, 2) promote resiliency while reducing and preventing risk factors for mental illness, and 3) foster resiliency at all levels of mental health care for youth, young adults, and families using evidence-based standards.

Treatment

This subcommittee focuses primarily on creating improved treatment

strategies for youth with or at risk for mental health challenges and their families in Stark County. Participants will be asked to help develop treatment strategies that 1) improve coordination of care 2) improve access to care 3) ensure that services are culturally and linguistically competent, and 4) individualized for youth, young adults and families using evidence-based standards.

The voices of youth, young adults, and family members matter.

DID YOU KNOW...

...the last time the Mental Health and Recovery Services Board of Stark County was awarded a grant to improve its System of Care was in the 1990s when Stark was only one of two counties in Ohio chosen to participate?

MEET THE CORE EXPANSION LEADERSHIP TEAM



Patti Fetzer
Grant Director



Jessica Zavala
Grant Coordinator



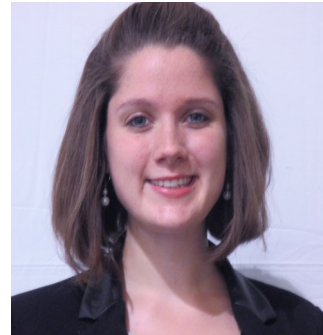
Stephanie Kutcher
Trauma-Informed Care
Lead



Janice Houchins
Stark County
Family Council



Remel Moore
Local Cultural
Competence Consultant



Joy Raub
Young Adult Consultant



Dr. Jeff Hallam
Kent State University,
College of Public Health



Melissa Mirka
Kent State University,
College of Public Health



Ryan Tingler
Kent State University,
College of Public Health