

Student Affiliates of School Psychology

WELCOME TO SASP AT KENT STATE!

2019

Hello SASP!

If this is your first year in the program, welcome!
For those of you returning, welcome back!
Hopefully you enjoyed a fun and restful summer break.

If you have not met with your mentor or mentee yet, try to find a time to get together! Fall semester can certainly be a challenging time, and having the support of a mentor can be extremely helpful! Don't be afraid to reach out to your mentor, other second year students, or your classmates.



What is SASP?

Student Affiliates in School Psychology, or SASP, is a graduate student organization, of which KSU School Psychology students are automatically members. SASP works under the guidance of the American Psychological Association the National Association of School Psychologists (NASP). SASP facilitates social cohesion, community and campus involvement, and professional development within the program.

2019 GOALS

- Volunteer for the Depression Screening
- Raise 2,500 through fundraising events
- Increase awareness of the School Psychology field by attending and holding events off campus
 - Mentor's must meet with and/or communicate with their mentee's 4 times per semester
 - Plan informal events to increase cohort relationships and wellness events

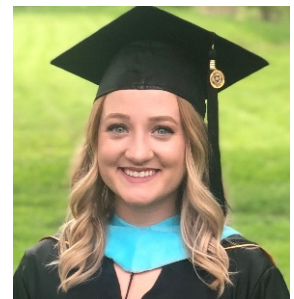
Meet the SASP Board!



Haley Murphy
Chair



Riley Zehentbauer
National, State & Local Liaison



Brittany Halstead
GSS Representative



Alexia Schoen
Vice Chair



Julie Demboski
Social Chair



Angela Cappuzzello
Doctoral Representative



Alyssa Smith
Treasurer



Mike Prokop
Secretary



Emly Rinaldi
Internship Representative

School Psychology Awareness Week (SPA W)

School Psychology awareness week is November 11th-15th 2019

This year's theme is "**Find Your Focus**," which can have a variety of meanings such as paying attention, being able to see an idea more clearly, identifying an area of interest, or being persistent and determined in one's effort. Focusing can help us set goals, identify action steps, communicate needs, and engage in discussions that help create the connections necessary for students to develop critical academic and social emotional skills.

Some potential activities this year include: presenting in undergraduate classrooms to educate them on the field of school psychology, a fundraiser bake sale, and having a informative table at the Ohio Latino education summit!

Get Involved!



Visit: <http://www.kent.edu/ehhs/ldes/spsy/sasp> For more information & updates!

Email aschoen3@kent.edu or hmurph13@kent.edu with questions

SASP AWARDS



Congratulations to Our Recipients of the 2019 School Psychology Program Awards!

- Excellence in fundraising award: Victory Smith
- Distinguished child advocate award: Jess Kukura
- Outstanding involvement award: Haley Murphy
- Outstanding collaboration and team building award: Emily Bennett
- Commitment to education and professional development award: Julie Demboski
- Excellence in mentor-ship award: Rachel Mathews

**You could be a
recipient of the
2020 School
Psychology
Program awards!**



UPCOMING EVENTS

National, State, and Local Organizations

If you haven't yet joined NASP or renewed your membership, now is a great time to do so! NASP has wonderful resources and information for its members. It also holds an annual conference in February where you can learn about a variety of topics from experts and stay up to date on the latest research in our field.

This year the conference is in Baltimore, Maryland, February 18 to the 21st!

Also consider affiliate organizations:

- American Psychological Association (APA)
- Ohio School Psychologists Association (OSPA)
- Kent/Akron Association of School Psychologists (KAASP)
- Cleveland Association of School Psychologists (CASP)

Community Involvement

If you are looking for unique volunteering opportunities, consider Super Service Saturdays through the office of Community Engaged Learning. You can choose from a variety of volunteer sites, including homeless shelters, animal shelters, and churches!

NEXT SASP MEETING

The next SASP meeting will be held on October 16th at 3:45 in room 414H. All are welcome! You do not have to be on SASP board to attend. Minutes are sent out after each meeting!

DEPRESSION SCREENING

The depression screening will take place on October 3rd from 10 am to 4pm at the Kent State student center. Many students find the depression screening to be a valuable experience! E-mail aschoen3@kent.edu with any questions!

1ST YEAR REP. ELECTIONS

Are you a first year and would like to be a board member of SASP? Elections will be held at the beginning of October! This is a great way to get involved!

FUNDRAISERS

Get involved in fundraising for SASP. This year we will be selling candles (Perfect for christmas gifts!) and pepperoni rolls! More information to come!

FALL SOCIAL

The fall social will be held in October! Come out and get to know your fellow cohort members better! More information will be available soon!

Common Acronyms

- IDEA- Individuals with disabilities act
- SPSY: School Psychologist
- ODE: Ohio Department of Education
- NASP: National Association of School Psychologists
- IEP: Individualized Education Plan
- ETR: Evaluative Team Report
- RTI: response to Intervention
- PBIS: Positive Behavior Supports
- MTSS: Multi-tiered Systems of support
- FBA: Functional Behavior Assessment
- CBM: Curriculum Based Measurement

