



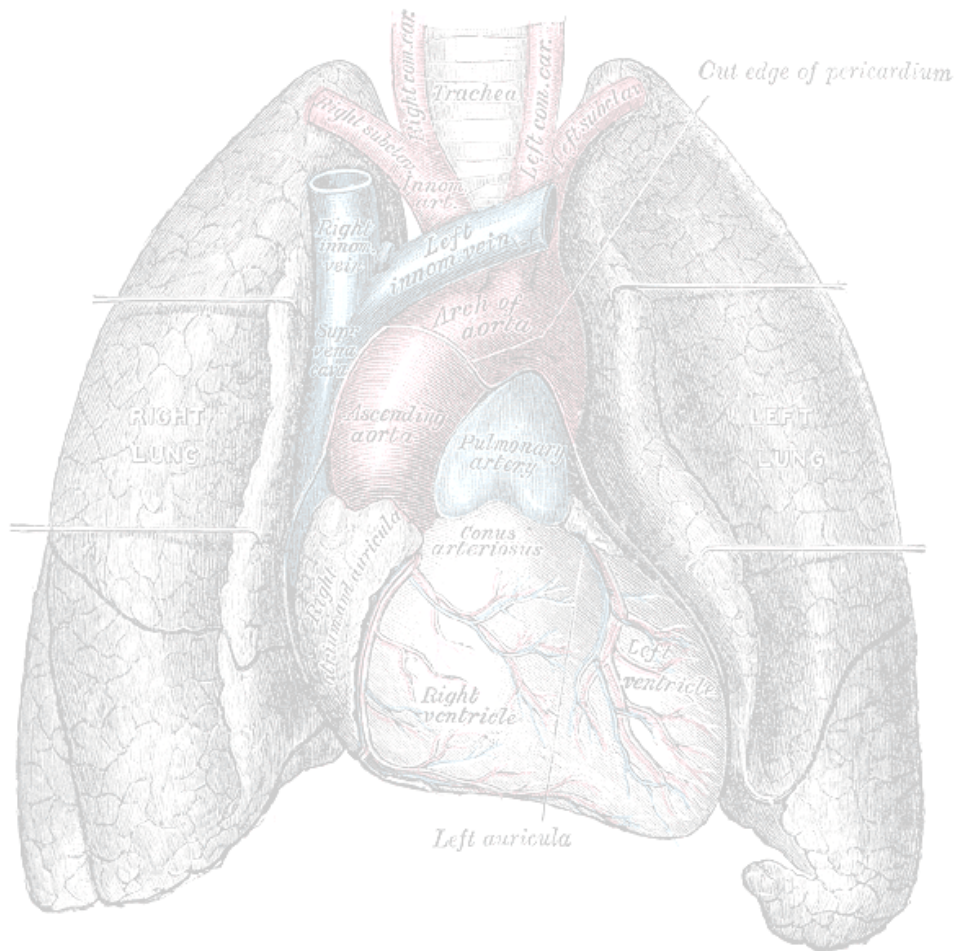
## ASHTABULA

# Respiratory Therapy Program

Associate of Applied Science Degree

Information and Application Packet

Ashtabula Campus & Cleveland Clinic Satellite Locations



<https://www.kent.edu/ashtabula/respiratory>

Application Deadline: November 1

# Program Faculty and Staff

## **Program Director**

Amy Rodenhausen, M.Ed., RRT  
Office: 127B - Morrison Hall  
Phone: 440-964-4362  
Fax: 440-964-4955  
[arodenha@kent.edu](mailto:arodenha@kent.edu)

## **Director of Clinical Education**

Julia Mariano, BS, RRT, RRT-RPFT  
Office: 127D – Morrison Hall  
Phone: 440-964-4562  
Fax: 440-964-4355  
[jmarian4@kent.edu](mailto:jmarian4@kent.edu)

## **Faculty & Satellite Coordinator**

Dr. Megan Alicea, Ph.D, M.E.T, BSRC, RRT  
Office: 127C Morrison Hall  
Phone: 440-964-4370  
Fax: 440-964-4355  
[mjacob22@kent.edu](mailto:mjacob22@kent.edu)

## **Administrative Clerk (Program Secretary)**

Theresa Hootman  
Office: 121 Morrison Hall  
Phone: 440-964-4252  
Fax: 440-964-4355  
[thootma1@kent.edu](mailto:thootma1@kent.edu)

# Kent State Ashtabula Campus Departments

## **Student Services Office**

Phone: 440-964-3322  
Fax: 440-964-4269

## **Academic Advising**

440-964-4217 (or)  
Schedule via the KSU Navigate App  
<https://www.kent.edu/ashtabula/academic-advising>

## **Financial Aid**

440-964-4213  
[ashtabulafinancialaid@kent.edu](mailto:ashtabulafinancialaid@kent.edu)

## **Tutoring & Student Accessibility Services**

Accessibility Services: 440-964-4225  
Tutoring: Schedule via the KSU Navigate App  
<https://www.kent.edu/ashtabula/tutoring-testing>

## **Counseling Services**

440-964-4234  
<https://www.kent.edu/ashtabula/counseling>

## **THE SCOPE AND PRACTICE OF RESPIRATORY CARE**

Respiratory therapists are members of a team of health care professionals working in a wide variety of clinical settings to evaluate, treat, and manage patients of all ages with respiratory illnesses and other cardiopulmonary disorders. As team members, respiratory therapists should exemplify the ethical and professional standards expected of all health care professionals.

Respiratory therapists provide a broad range of patient care which includes clinical decision-making and patient education. The respiratory care scope of practice includes, but is not limited to the following basic competencies:

- acquiring and evaluating clinical data;
- assessing the cardiopulmonary status of patients;
- performing, or assisting in the performance of, prescribed diagnostic studies such as obtaining blood samples, blood gas analysis, pulmonary function testing, and polysomnography;
- evaluating data to assess the appropriateness of prescribed respiratory care;
- establishing therapeutic goals for patients with cardiopulmonary disease;
- participating in the development and modification of respiratory care plans;
- case management of patients with cardiopulmonary and related diseases;
- initiating prescribed respiratory care treatments, evaluating and monitoring patient responses to such therapy, and modifying prescribed therapy to achieve the desired therapeutic objectives
- managing life support activities;
- initiating and conducting prescribed pulmonary rehabilitation;
- providing patient, family, and community education;
- promoting cardiopulmonary wellness, disease prevention, and disease management;
- promoting evidence-based practice by using established clinical practice guidelines and by evaluating published research for its relevance to patient care

(Excerpt from: CoARC's "Accreditation Standards for the Profession of Respiratory Care" 2022)

Additional Information about Respiratory Therapy can be accessed at the American Association of Respiratory Care's (AARC) website: [www.aarc.org](http://www.aarc.org) or <https://be-an-rt.org/>



Prospective Student,

The Associate of Applied Science in Respiratory Therapy (RESP) gives you the skills to evaluate, treat and care for patients with breathing and cardiopulmonary disorders. Practicing under the direction of a physician, respiratory therapists assume primary responsibility for all respiratory care therapeutic treatments and diagnostic procedures. Respiratory Therapists also provide complex therapy requiring considerable independent judgment, such as caring for patients on life support in intensive-care units of hospitals. An associate degree is earned with successful completion of 65 semester hours of coursework.

After graduating with the associate degree in Respiratory Therapy, graduates are then eligible to take the national credentialing examinations administered by the National Board for Respiratory Care (NBRC). Credentials that can be earned by Kent State graduates include the Certified and Registered Respiratory Therapist (CRT, RRT). **Note: To work in the State of Ohio as a Respiratory Care Professional, licensure is required. In Ohio, the RRT credential is required to obtain the Respiratory Care Professional license.** See the State Medical Board of Ohio's website for detailed information about licensure to work in the State of Ohio.

<https://med.ohio.gov/Apply/Respiratory-Care-RC>

For information about licensure in other states see Kent State's Professional Licensure Disclosures website: <https://www.kent.edu/kso/programs-leading-licensure>

Students have the option to obtain a Limited Permit (license) after completing their first year in the RESP program allowing them to work for a limited time until the RRT credential is earned. The Limited Permit is optional and not part of the RESP program. In addition, worked hours under the Limited Permit cannot be used towards required clinical time.

Many Northeastern Ohio Medical Facilities hire student therapists to do routine therapy because it is more cost effective, and it provides an opportunity to get to know the student before they graduate. Typically, these students obtain full-time employment right after they graduate because their place of employment is already familiar with them.

**PROGRAM WEBSITE:** <https://www.kent.edu/ashtabula/respiratory>

## **UNIVERSITY ADMISSION PROCESS**

1. Graduate from an accredited high school or receive a passing score on the GED examination.
2. Complete and submit the KSU admission application.  
This can be completed online at <https://www.kent.edu/ashtabula/apply-now>
3. Contact all high schools and colleges attended and request official transcripts be mailed to: KSUA 3300 Lake West Rd, Ashtabula, Ohio 44004 to be evaluated for transfer credit(s). Admissions will not accept transcripts that are hand delivered. Parchment / electronic transcripts and high schools can email transcripts directly to [transcripts@kent.edu](mailto:transcripts@kent.edu)
4. Attend an Ashtabula campus orientation. Schedule this with the Office of Admissions 440-964-4217 or at <https://www.kent.edu/ashtabula/new-student-orientation>. In person and virtual sessions are available.
5. Schedule and complete any Placement Testing. Students required to take Placement testing will receive a letter promoting them to register. Call 440-964-4217 for questions related to your individual testing requirements.
6. Schedule and attend a Respiratory Therapy Information Session on campus or virtual via Microsoft Teams with the program director. Registration: <https://www.kent.edu/ashtabula/respiratory>. Admission requirements and program format will be discussed and questions answered. Contact the program director at [arodenha@kent.edu](mailto:arodenha@kent.edu) for an individual meeting if you are not able to sign up for an Info Session.

## **PROGRAM PRE-ADMISSION REQUIREMENTS**

- Completion of **Anatomy and Physiology I** (BSCI 11010 or 21010)
- Completion of **Chemistry** (10050 or 10055 or 10060 or 10061)
- Completion, or placement out of MATH 00022 (or equivalent). Based on high school GPA, some students will need to take the ALEKS math placement test.
- A minimum “**C**” (2.0) grade in all required courses
- A cumulative **GPA** of  $\geq$  **2.70** from your last academic experience.
- Complete shadowing experience:
  - Spend at least **4** hours of job shadowing with a respiratory therapist in a medical facility (complete job shadowing forms at the end of this packet).

**NOTE:** Kent State University at Ashtabula does not offer advanced placement into the RESP program.

## **PROGRAM APPLICATION**

To apply to the program, go to: <https://www.kent.edu/ashtabula/health-degrees/rtt-application-information> to apply to the program online. Please be sure to respond to all the questions on the application. Incomplete applications will not be considered for admission to the program.

## **PROGRAM ADMISSION PROCESS**

The RESP Program admits a new class of 20 students to the Ashtabula Campus and a new class of 10 students to the Cleveland Clinic Satellite each year. The application deadline is November 1 with classes beginning in January. **Students that will complete pre-admission requirements during the fall semester may also submit an application for consideration.** These students *may* receive provisional admission while completing pre-admission criteria. Incomplete and/or late applications will not be considered for admission to the Cleveland Clinic location. Late applicants will be only considered at the Ashtabula Campus location if seats are available after the initial set of applicants are reviewed.

## **TECHNICAL STANDARDS**

Technical Standards are the physical requirements deemed necessary by the program for a student to acquire the competencies required to successfully complete the program. These are in addition to the educational requirements and behavioral characteristics necessary for the student to successfully participate in and complete the respiratory therapy program.

The student should carefully look over these technical standards for the profession of Respiratory Therapy and ask questions if not familiar with the activities or functions listed. The student must decide if he or she has any limitations that may restrict or interfere with satisfactory performance of any of the requirements. It is ultimately the student's responsibility to meet these technical standards with or without accommodations. The student should consult with their physician and the Program Director to discuss any concerns related to meeting these technical standards.

- **Hearing** – Students must be able to hear and understand patients and staff; assess and monitor patient sounds; use a stethoscope to hear heart and breath sounds; hear percussion sounds during patient assessment and have the ability to hear sounds (alarms) from a variety of equipment.
- **Mobility** – Students must have mobility and strength to support and move patients. They must be able to work while remaining in a standing position for 60-90 minutes. Additionally, students must be able to move quickly from place to place to perform patient care including support and transfer of patients safely and to respond to emergencies in a timely manner. They must be able to reach above shoulder height and below waist level to manipulate equipment and be able to lift and transport oxygen cylinders and attach regulators.
- **Motor Skills (fine and gross)** – Students must be able to perform multiple motor tasks simultaneously. They also must have fine and gross motor skills sufficient to handle equipment and provide safe and effective patient care including preparing and manipulating syringes and needles, administer aerosols, suction patients, adjust pressure gauges, perform airway management and CPR. Students must have steady arm

and hand movements while manipulating objects or assisting patients. They must have the ability to lift a minimum of 40 pounds.

- Visual – Students must be able to monitor and assess patient and equipment function. They also must have ability to provide safe and effective respiratory care including reading written instructions/orders and reading fine print on monitors and gauges. Students must be able to differentiate color and characteristics of sputum for signs of infection or disease and be able to chart procedures and observations legibly. They must have ability to see and discriminate between a variety of equipment visual alarms and be able to observe demonstrations, patients close up, and at a distance to learn skills and gather patient data (e.g., observe a patient's gait, appearance, posture, etc.).
- Tactile – Students must be able to assess patient's response to therapy tactilely including distinguishing textures, degrees of firmness, temperature differences, pulse rate, vibrations and strength.
- Communication - Students must be able to effectively communicate in the English language verbally and in writing with patients and members of the healthcare team. Students also must be able to accurately read and comprehend written material in English.
- Intellectual and Cognitive Abilities - Students must be able to measure, calculate, reason, analyze, synthesize, integrate and apply information. Problem solving and clinical skills required of therapists, involve all the aforementioned intellectual abilities.
- Behavioral and Social Attributes - Students must possess the emotional health required to use their intellectual abilities fully, such as exercising good judgment, promptly completing all responsibilities attendant to the diagnosis and care of patients, and developing mature, sensitive and effective relationships with patients and other healthcare workers.
- Students must be able to tolerate physically taxing workloads and to function effectively under stress. They must be able to adapt to changing environments, display flexibility, and learn to function in the face of uncertainties and ambiguities inherent in the clinical problems of many patients. Compassion, integrity, concern for others, interpersonal skills, interest and motivation are personal qualities that will be assessed during the educational process.
- Ethical Standards - Students must demonstrate professional demeanor and behavior and must perform in an ethical manner in all dealings with peers, faculty, staff, and patients.

### **Disability Accommodation Statement**

Kent State University is committed to inclusive and accessible education experiences for all students. University Policy 3342-3-01.3 requires that students with disabilities be provided reasonable accommodations to ensure equal access to course content. Students with disabilities are encouraged to connect with Student Accessibility Services as early as possible to establish accommodations.

Student Accessibility Services (SAS) Contact Information:

Location: First floor Kent State University Ashtabula Library

Email: [iskleres@kent.edu](mailto:iskleres@kent.edu)

Phone: 440-964-4565

Web: <https://www.kent.edu/ashtabula/student-accessibility-services>

### **Kent State Policy 3-01.3**

(c) Requirements. The university shall make reasonable accommodations in its academic requirements to ensure that such requirements do not discriminate on the basis of disability against a qualified individual with a disability, whether applicant or student. However, requirements that the university can demonstrate are essential to the program of instruction of the student, or any directly related licensing requirement, or to the physical safety of students, faculty, or staff, will not be regarded as discriminatory.

## **STUDENT SELECTION**

Student selection will be made based on student performance (using a point system) based on the following criteria:

- Cumulative GPA in student's most recent academic experience
  - *(If applicable, a student must obtain  $\geq 12$  semester hours to establish a new GPA from another accredited college or university.)*
- Number of required non-RESP courses completed
- Grades received in the non-RESP courses completed
- Program receipt of both completed shadowing experience forms

Program applications are scored based on the criteria listed, then ranked based on that score for admission. Applicants will be notified by email if they are accepted or not within 3 weeks following the application deadline. There is no waiting list, but students who continue to take required courses will have a stronger, more competitive application the following year.

## **PROGRAM ADMISSION – ACCEPTANCE**

Accepting a seat in the program is only for the upcoming spring semester. If a student decides not to accept their seat or wait, they must reapply the following year. Once accepted to the program, students must take each semester consecutively for 2 years due to RESP courses being offered only once per year. If a student fails a class, at the discretion of the RESP readmission committee, they may be readmitted to the program the following year, one time only, to retake the failed semester and continue the program.

If one program location fills, students may be offered a seat if available at the other program location. If the student accepts and a seat opens at the student's preferred location, the student may be permitted to move to the original location that they applied to. This move would occur at the beginning of a semester only at the discretion of the program director.

1. Accepted students are required to attend a virtual program orientation in early January, prior to the start of the Spring semester. Additional details including date and location will be provided in the acceptance email.
2. All students accepted into the program are required to complete a state and federal background check and begin working on Clinical Health Requirements. **Instructions will be provided in your acceptance letter.**
3. All students accepted into the Cleveland Clinic program location will be required to complete the Cleveland Clinic onboarding process including obtaining their student ID badge to be permitted on site for lab starting with the Spring semester. This does include students that are currently employed at CC. Students need to meet all CC health requirements (example: having received their seasonal flu shot, physical exam, TB testing, etc.).

***\*Students must notify the RESP program director of any convictions prior to starting the program. A past conviction may disqualify someone from completing clinical rotations, taking credentialing examinations, receiving a state license to practice (Section 4761.04 of the Ohio Revised Code), and/or obtaining employment after graduation.\****

## **PROGRAM SCHEDULE**

The RESP program is delivered in a hybrid format. Classroom material is presented asynchronously and synchronously based on the course content. Synchronous online sessions have set, scheduled meeting times on Microsoft Teams. Students are required to participate in synchronous sessions with their cameras on and microphone available to fully participate in class. Synchronous / live virtual RESP classes are scheduled 1 day per week each semester.

Labs are held in person, once weekly during a total of 3 semesters during the program (First Year of program - Spring & Fall Semester, Second Year of program - Spring Semester). The location of a student's lab is based on the program location the student was accepted into only. Ashtabula based students will attend lab at the Kent State University at Ashtabula Campus. Cleveland Clinic Students will attend lab at the Cleveland Clinic Main Campus Simulation Center.

Clinical rotations start the first fall semester of the program and will continue each semester until the program ends. In the first fall, the clinical rotation is one eight shift per week. In the final three semesters of the program (Spring/Summer/Fall), clinicals are two 8 - hour days per week. Clinicals are almost exclusively scheduled during day shift (start times between 6-7am) except for sleep lab rotations. Clinical schedules are typically provided to students at least 4 weeks prior to the start of each semester, sooner if possible. In the event that there is a delay in the release of the clinical schedule, clinical hours may be adjusted to accommodate the delay and allow ample time for students to adjust their schedules.

Students enrolled in the Ashtabula Program location will attend clinical rotations at various locations across Northern Ohio: Ashtabula, Cleveland, Youngstown/Warren, Akron, and possibly western PA). This includes, but is not limited to MetroHealth, University Hospitals, Mercy Health, Ashtabula Regional Medical Center, and UPMC Hospitals. Clinical attendance within the Cleveland Clinic Health System will depend on availability.

Students enrolled in the Cleveland Clinic location will attend ALL clinical rotations throughout the Cleveland Clinic Health System, no exceptions. Locations can include Avon, Akron General, Main Campus, Euclid Hospital and all locations in between/around Northern Ohio.

Students attend a different clinical rotation location each semester to ensure adequate exposure to all aspects of respiratory therapy – they may leave this site for a short period of time to attend specialty rotations at another location. It may be necessary to travel a significant distance depending on where a student lives to achieve all program requirements.

## **TECHNOLOGY REQUIREMENTS FOR COURSEWORK**

To be successful in this program, students will be required to own a laptop computer and have reliable internet service for online coursework. The following is offered as guidance: Students will need to have the following to participate in program courses:

- A laptop computer (tablets, Chromebook, phones do NOT meet requirements)
- A working built-in or external webcam and microphone
- Internet speed of at least 2 Mbps download and 2 Mbps upload. Hot spots are not recommended.
- Test internet speed at: <http://www.speedtest.net>
- Browser with pop-up blocker

It is expected that students will be well versed in utilizing computers and conducting Internet searches, checking KSU email daily, utilizing Microsoft Word and PowerPoint to submit assignments.

Students are required to bring laptops to on-site locations for testing purposes during the program.

## **PROGRAM PROGRESSION TO GRADUATION**

**The RESP program requires a minimum of 65 semester/credit hours**, which can be completed in two calendar years. Respiratory Therapy courses can only be taken following acceptance into the program, and must be taken in the semester offered and in the order shown on the program Roadmap. Some RESP courses include laboratory and clinical components. Students must pass the didactic portion of the course **AND** achieve satisfactory skill competencies in the lab **AND** at the clinical site in order to pass these courses.

The program cannot be completed in less than two years, but the workload during the program can be reduced by completing some courses prior to starting the program. However, students using financial aid should plan their course load each semester accordingly to fulfill credit hour requirements set by their financial aid plan.

More detailed information including the college Roadmap and course descriptions can be found in the Kent State University College Catalog at: <https://catalog.kent.edu/colleges/ap/respiratory-therapy-aas/>

## **FINANCIAL AID/SCHOLARSHIPS**

Financial Aid and Scholarship Information can be found at:

<https://www.kent.edu/ashtabula/aid>

<https://www.kent.edu/ashtabula/scholarships>

<https://kent.scholarshipuniverse.com/public/home?scholarshipType=public&take=10&skip=0>

## **TUITION/FEES/OTHER PROGRAM RELATED COSTS**

**Tuition:** Information about tuition can be found on the campus tuition webpage:

<https://www.kent.edu/ashtabula/tuition-fees>

**Course Fees:** Fees are associated with several RESP courses and vary per course. Fees are approximately \$800 over the course of the program (subject to change). The specific amount of course fees are provided at registration.

**Books:** The costs of textbooks vary, but students can expect to pay approximately \$800 per year on textbooks.

**Laptop:** All students are required to have a laptop with working camera and microphone to be used for online / live virtual course activities. Laptop use will be required for in-person testing throughout the program. Cost will vary based on student selection.

### **Other costs:**

- Students will need to purchase uniforms, shoes, and a stethoscope and a wristwatch for clinicals. These items can be purchased for an estimated \$250-\$300 or more depending on where students choose to purchase from.
- Students must have a physical exam and be current on specific immunizations and health tests. (Specific information is provided with the acceptance letter.) The cost for this will vary based on the student's insurance and the healthcare provider chosen.
- CastleBranch is a web-based vendor used to store and manage student information including: background checks, physical exams, immunizations, screenings, etc. Students will pay a one-time fee of \$139 (subject to change) after accepting their seat. This includes the cost of their first set of background checks. This account will be used for the duration of the program.
- A second set of background checks (Ohio and FBI) will be required by January 31 when students start the second year of the program. The student will directly pay the location they choose to get this done. The cost will vary based on location selected by the student (approx. \$90-\$100).
- Trajecsyst is an online clinical documentation system used throughout the program's clinical semesters. Students will purchase their access directly from Trajecsyst using information provided by the program approximately 1 month in advance of the first clinical rotation. The current cost is \$150 to cover 4 clinical semesters (subject to change).

Questions about tuition, fees or other costs related to the program should be directed to the program director: Amy Rodenhausen 440-964-4362 or [arodenha@kent.edu](mailto:arodenha@kent.edu)

## **COURSES FROM OTHER INSTITUTIONS**

**Transfer courses:** For a formal evaluation of your transcripts to determine how classes from another institution will transfer, you must apply to KSU and have your transcripts sent to Kent State. It will take several weeks to complete this process. For an informal assessment of how courses will transfer, you may contact the RESP Program Director to discuss probable scenarios. You may also visit the college's transfer page for information about transferring courses at: <https://www.kent.edu/transfer>.

**Transient classes:** Students who wish to complete a course at another institution while enrolled at KSU must complete the necessary forms from Advising **prior to starting the course**. The purpose is to ensure credits are applied to the student's KSU transcript. The student taking transient coursework is responsible to make sure that his or her coursework taken at another university is acceptable for transfer and meets the graduation requirements of the RESP Program. Students in the program are strongly discouraged from taking transient classes their final semester because of the difficulty in obtaining transcripts from other institutions of higher education in time for graduation.

## **HOUSING & TRANSPORTATION**

The KSU – Ashtabula Campus is a small regional campus. No on-campus housing available for students at this location. Students are welcome to move to the area and locate an apartment or make other arrangements to complete their education. Students enrolled in 1 credit hour or more are eligible to apply for student housing at the Kent Campus. Note: the distance between the Kent Campus and the Kent State University - Ashtabula Campus is 80 miles (130km), and distance between the Kent Campus and Cleveland Clinic Main Campus is 40 miles (65 km).

Students enrolled in both program locations are responsible for securing their own transportation to and from class, labs and all clinical rotation locations. Use of public transportation may not be feasible. Taxi / Uber / Lyft services are available. Students are responsible for all transportation/parking costs to attend class, lab, and clinicals.

## **JOB SHADOWING INFORMATION**

Job shadowing introduces potential respiratory therapy students to the roles and responsibilities of today's respiratory therapists. A minimum of four (4) hours must be completed prior to admission in the Respiratory Therapy Program at KSU.

Students can contact a hospital of their choice – call and ask to be transferred to the respiratory therapy department, then explain you are applying to Kent State's respiratory therapy program and would like to setup a 4 hour job shadowing experience.

Some hospitals may require orientation, health requirements, and/or paperwork to be completed

prior to shadowing. Students are responsible for completing requirements to be able to complete the process successfully.

To job shadow within the Cleveland Clinic Health System, contact Brittany Conley: [conleyb@ccf.org](mailto:conleyb@ccf.org) to start the process. Note that students should allow at least 4 weeks from initial contact for completion of onboarding requirements to set up and complete the experience.

Dress in appropriate attire: dress shirt with khaki or black casual pants; no jeans, shorts, or sandals. Please keep in mind that you are a guest of the facility. Professional behavior is expected.

This page intentionally left blank.



## Respiratory Therapy Shadowing Form

### To be completed by Student

The form below must be completed and submitted to the Program Director when the student applies to the program by November 1.

Prospective Student's Name: \_\_\_\_\_

#### **Shadowing Experience:**

Hospital Name \_\_\_\_\_

What did you observe?

---

---

---

---

What did you like most about this experience?

---

---

---

---

What did you like least about this experience?

---

---

---

Contact Hours completed? \_\_\_\_\_ Date \_\_\_\_\_

#### **RETURN TO:**

Kent State University at Ashtabula  
Attention: Respiratory Therapy Program Director  
3300 Lake Road West Room 127B • Ashtabula, OH 44004  
Phone: 440-964-4362 • Fax: 440-964-4355

This page intentionally left blank.



# Respiratory Therapy Job Shadowing Form

**To be completed by the  
Registered Respiratory Therapist**

Prospective student: Please give this form to the Respiratory Therapist you are shadowing. This form must be faxed directly to Kent State University at Ashtabula by the Respiratory Therapist. We cannot accept forms that are hand delivered by the student.

**Prospective Student Name:** \_\_\_\_\_ **Date:** \_\_\_\_\_

**Hospital Name:** \_\_\_\_\_ **Hours completed:** \_\_\_\_\_

**Comments:** \_\_\_\_\_  
\_\_\_\_\_  
\_\_\_\_\_  
\_\_\_\_\_  
\_\_\_\_\_

**RT Name (print)** \_\_\_\_\_

**RT Signature** \_\_\_\_\_ **Email/Phone:** \_\_\_\_\_

Please **FAX: 440-964-4355** or mail to Kent State University at Ashtabula, Attn: RESP Program Director, 3300 Lake Road West, Ashtabula, Ohio 44004

Forms must be received by **the application deadline of November 1<sup>st</sup>**.