

Section on Mental Health

IN THIS ISSUE

1

MESSAGE FROM THE CHAIR

2-4

ASA ANNUAL MEETING SCHEDULE OF MENTAL HEALTH SESSIONS

5

TRIBUT TO LEN PEARLIN

6-7

ANNOUNCEMENTS

7-9

PROFILES OF GRADUATE STUDENTS ON THE JOB MARKET

9

MESSAGE FROM NEWSLETTER EDITOR

MESSAGE FROM THE CHAIR

Greetings Section Members,

Summer might be coming to an end, but we have the Annual Meeting to look forward to! This issue provides a summary of our offerings for the ASA, as well as for the SSSP. It's a terrific agenda. I'm proud to see presentations that are so topical and timely. Our section is producing research that couldn't be better positioned for impact. Thank you for your submissions and a special thanks to those who organized these sessions.

I'll draw your attention to two things that are unique to this year's meeting and should be part of your "must attend" list, including the Award Ceremony. The first is the Leonard I. Pearlin memorial, to be held Saturday night. This newsletter also includes a tribute, based on a special issue of *Society and Mental Health* devoted to Len's work. That issue is in print and I encourage you to check it out. While you're there, note that S&MH now has an impact factor.

The second is the special session on reviewing for medical sociology and mental health journals, to be held Monday morning. One reason S&MH is doing so well so soon is the high quality reviews that we as a community produce. Be sure to attend.

The other item I'll highlight is the description of three graduate students on the market. To me there's no more important issue for our section than insuring its future. If your department is hiring in the area of medical sociology or mental health, be sure to take a look. The ASA provides you an opportunity to meet with them in person.

I look forward to seeing you all soon!

Jason Schnittker, Professor of Sociology
University of Pennsylvania





110th ASA Annual Meeting

**August 22-25, 2015 | Chicago, IL
Hilton Chicago and Hilton Palmer House**

Mental Health Sessions

Section Council Meeting:

Saturday Aug 22nd 7:00 am - 8:15 am

Section Business Meeting:

Saturday Aug 22nd 5:30 pm – 6:10 pm

Sociology of Mental Health Award Ceremony:

Saturday, Aug 22nd 4:30 pm to 5:30 pm

Memorial Gathering in Honor of Leonard Pearlín:

Saturday, Aug 22nd 6:30 pm-8:15pm

Joint Reception with Medical Sociology

Monday Aug 24th 6:30pm - 8:30pm

Section on Sociology of Mental Health Paper Sessions

037- Mental Health Services: Contexts and Consequences

Time: Saturday, Aug 22nd 8:30am -10:10 am

Session Organizer: Christian Ritter, Northeast Ohio Medical University

Presider: Christian Ritter, Northeast Ohio Medical University

Individual Submissions:

2

AMERICAN SOCIOLOGICAL ASSOCIATION SECTION ON MENTAL HEALTH

Mental Health Resource Utilization Among Graduate Students: Rachel La Touche, Indiana University; Rebecca K. Grady, Indiana University; Kristina Fasteson Simacek, Indiana University; Alyssa A. Powers, Indiana University; Jamie Lynn Oslawski-Lopez, Indiana University

Public Community Mental Health Care in Nonprofit Organizations: Kerry Michael Dobransky, James Madison University

The ADHD Diagnostic Label and Academic Achievement in Two Longitudinal, Nationally-Representative U.S. Samples: Jayanti Johanna Owens, University of Wisconsin-Madison; Heide Jackson, University of Wisconsin-Madison; Angela Forgues, University of Wisconsin-Madison

When Do Substance Abuse and Psychiatric Problems Lead to Help Seeking?: Russell K. Schutt, University of Massachusetts-Boston; Kristina Jensen, University of Massachusetts-Boston; Marsha Ellison, University of Massachusetts and Veterans Administration

Discussant: Natalie Bonfine, Northeast Ohio Medical University

104- New Dimensions of Difference: Underexplored Variation in Mental Health

Time: Saturday, Aug 22nd 2:30 pm-4:10 pm

Session Organizer: Ning Hsieh, University of Chicago

Presider: Ning Hsieh, University of Chicago

Individual Submissions:

Depression in Same-Gender Couples: Mieke Beth Thomeer, University of Alabama-Birmingham

Parents Under Pressure: The Social Dynamics Surrounding Blame for Suicide Deaths in a Privileged Community: Anna Strassmann Mueller, University of Memphis; Seth Abrutyn, University of Memphis

[HTTP://WWW.KENT.EDU/SOCIOLOGY/MENTALHEALTH/INDEX.CFM](http://www.kent.edu/sociology/mentalhealth/index.cfm)

Many Burdens to Bear: Culture, Mental Health, and the Overlooked Diversity in Undergraduates' Help-Seeking Strategies:

Anthony Abraham Jack, Harvard University

The Childhood Family Income Effects on Early Adulthood Depression:

Kiwoong Park, State University of New York-Albany

Immigration, Subjective Social Status, and Mental Health among Latinos and Asian Americans:

Anastasia S. Vogt Yuan, Virginia Polytechnic Institute and State University

Discussant: Brea Louise Perry, Indiana University

Section on Sociology of Mental Health Regular Sessions

147- Current Issues in Mental Health

Time: Sunday, Aug 23rd 8:30am -10:10 am

Session Organizer: Krysia Mossakowski, University of Hawaii-Manoa

Presider: Jo C. Phelan, Columbia University

Individual Submissions:

Police Response to Domestic Violence: Situations Involving Veterans Exhibiting Signs of Mental Illness:

Fred E. Markowitz, Northern Illinois University; Amy Watson, University of Illinois-Chicago

Rethinking the Stress Process: Stigma, Trauma, PTS, and Gender Differences among Active Duty Military Personnel:

Sean Matthew Vina, Indiana University Bloomington

Discrimination and Mental Health among Migrant and Ethnic Groups from South East London:

Stephani Hatch, King's College London; Billy Gazard, Institute of Psychiatry; David R. Williams, Harvard University; Souci Frissa, King's College London; Laura Goodwin, King's College London; Matthew Hotopf, King's College London

Measuring Mental Distress: Lessons from DSM-5's Failed Commensuration:

Owen Whooley, University of New Mexico

Discussant: Bruce G. Link, Columbia University

277- Advancing Research on Mental Health Disparities

Time: Sunday, Aug 23rd 2:30pm -4:10 pm

Session Organizer: Krysia Mossakowski, University of Hawaii-Manoa

Individual Submissions:

Economic Resources and Trajectories of Children's Mental Health over the Early Life Course:

Jinette Comeau, Western University; William R. Avison, Western University; Andrea E. Willson, University of Western Ontario

Mental Health, Social Roles and the Gendered Life Course:

Katrina Leupp, Washington State University

Economic Security, Social Cohesion, and Depression Disparities in Transitional Societies: A Comparison of China and Russia:

Ning Hsieh, University of Chicago

The Relationship between Education and Mental Health: New Evidence from a Discordant Twin Study:

Andrew Halpern-Manners, Indiana University; Landon Schnabel, Indiana University-Bloomington; Elaine Marie Hernandez, Indiana University; Judy L Silberg, Virginia Commonwealth University; Lindon J. Eaves, Virginia Commonwealth University

Discussant: Blair Wheaton, University of Toronto

Section on Sociology of Mental Health Roundtables

Table 01. Mental Health

Time: Monday, August 24th 10:30 am to 11:30pm

Session Organizer: J. Scott Carter, University of Central Florida

Table Presider: Gabriele Ciciurkaite, University of Kentucky

Individual Submissions:

Emotional Labor in Health Survey Research: Interviewing Hospitalized Patients for a

Wage: Gabriela Leon-Perez, Vanderbilt University

Feeling Fat and Sad? The Relationship between Body Weight, Weight-Based Discrimination and Psychological Well-Being: Gabriele Ciciurkaite, University of Kentucky

Homophobic Violence, Coping Strategies, and Mental Health: Lies D'haese, Ghent University; Alexis Dewaele, Ghent University; Mieke Van Houtte, Ghent University

Table 02. 02. Mental Health

Time: Monday, August 24th 10:30 am to 11:30pm

Session Organizer: J. Scott Carter, University of Central Florida

Individual Submissions:

Social Support and Resilience to Depression over the Life Course: Systematic Review and Future Directions: Genevieve Gariepy, McGill University; Helena Honkaniemi, McGill University; Amelie Quesnel-Vallee, McGill University

The Risk of Unrealistic Optimism: When Expectations and Aspirations Don't Match: Brent Harrison Curdy, Duke University

A Closer Examination of the Relationship Between School Spillover and College Student Health: Katlyn Moes, University of North Dakota; Jenelle Swenberger, University of North Dakota; Daphne Pedersen, University of North Dakota

Special ASA Session: Professional Development Workshop. Session 362: "Reviewing for Medical Sociology and Mental Health Journals."

Monday August 24, 10:30 am – 12:10 pm

Session Organizers: Susan Bell (Medical Sociology Section) and Ginnie Hiday (Mental Health Section)

Co-leaders: Elaine Wethington, Society and Mental Health, Gil Gee, Journal of Health and Social Behavior, Gareth Williams Sociology of Health & Illness.

This workshop is designed for young sociologists to assist them in the important and essential task of professional sociologists, writing manuscript reviews for journals. Editors of three medical sociology and mental health journals will provide suggestions for writing well crafted, informative, critical and helpful reviews (Society and Mental Health, Journal of Health and Social Behavior, Sociology of Health & Illness). The editors will discuss objectivity, criteria for revision recommendations, helpful considerations for authors, time allocations, timely submissions, conflict of interests, and ethics. Sociologists at more advanced stages and in other areas are welcome.



Society for the Study
of Social Problems
In Pursuit of Social Justice

Removing the Mask, Lifting the Veil: Race, Class, and Gender in the 21st Century
65th Annual Meeting: August 21-23, 2015
Radisson Blu Aqua Hotel, Chicago, IL

Friday August 21st

Session 18, 10:30 am-12:10 pm: **Race, Class, Gender and Mental Health**

Society and Mental Health Divisional Meeting 12:30 - 2:10pm

Saturday August 22nd

Session 67, 8:30 am-10:10 am: **Mental Health, Law, and Institutions**

Session 79, 10:30 am -12:10pm: **The Stress Process and Mental Health**

Sunday August 23rd

Session 118, 8:30-10:10am: **Open Topics in Mental Health**

Session 136, 10:30 am-12:10pm: **Mental Health, Aging, and the Life Course**

Session 175, 4:30 pm -6:10pm: **Mental Health, Crime and Deviance**

Tribute to Leonard Pearlin

The following is the abstract of an article appearing in the July, 2015, issue of *Society and Mental Health*.

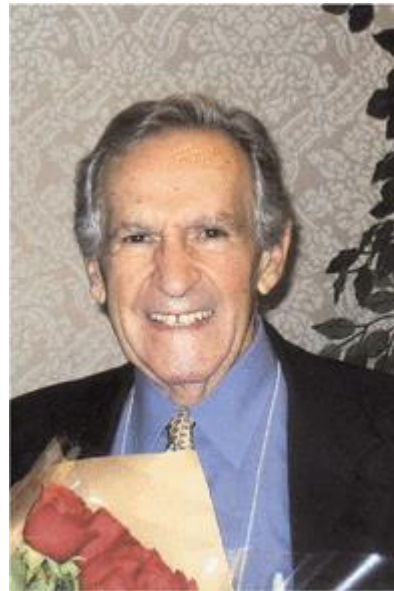
The Stress Process An Appreciation of Leonard I. Pearlin, by Carol S. Aneshensel, UCLA and William R. Avison, Western University

Abstract

For more than 60 years, Leonard I. Pearlin's contributions to theory and research fundamentally shaped the sociology of mental health, medical sociology, and the sociology of aging and the life course. He died last year, and this article is an expression of appreciation for the person and his work as expressed by his colleagues, students, and friends. The testimonials collected here explain his seminal work and why it altered the field, describe how his intellectual leadership affected our own work, attest to his generous mentoring of students and young academics, and try to convey his character and why he has engendered such affection. The material quoted from selected Pearlin publications articulates most clearly why this work continues to resonate with sociologists concerned with the impact of society on the mental health of its members.

Leonard I. Pearlin created a body of work that has set the course for the sociological study of stress since its inception and did so with a warmth and grace equal to the preeminence of his scholarship, qualities that endeared him to his colleagues. He died July 23, 2014, at the age of 89 after a brief illness. For more than 60 years, his contributions to theory and research have fundamentally shaped the sociology of

mental health, medical sociology, and the sociology of aging and the life course. In this article, his colleagues explain the seminal impact of his work on the field and their own scholarship and express their appreciation, esteem, and affection.



“Yet it is of considerable importance to study social structures and their effects on individual well-being. If sociologists don't do this and do it well, who will?” (Pearlin 1989: 255)

There is a lengthy tribute to Len on the Mental Health Section's website, with a number of photos of him at various venues over the years. Thanks to everyone who contributed.

**Please Encourage
Membership in our Section**

ANNOUNCEMENTS*Books*

Schutt, Russell K., Larry J. Seidman, and Matcheri Keshavan (Eds.). 2015. *Social Neuroscience: Brain, Mind, and Society*. Cambridge, MA: Harvard University Press. Link to the Harvard University Press website: <http://www.hup.harvard.edu/catalog.php?isbn=9780674728974>.

ISSUES IN HEALTH AND HEALTH CARE FOR SPECIAL GROUPS, SOCIAL FACTORS AND DISPARITIES

Papers dealing with macro-level system issues and micro-level issues involving special groups, social factors and disparities linked to issues in health and health care are sought. This includes examination of health and health care issues of patients or of providers of care especially those related to special groups, social factors including education, family, income, government, or neighborhoods or social networks or health beliefs and attitudes. Papers that focus on linkages to policy, population concerns and either patients or providers of care as ways to meet health care needs of people both in the US and in other countries are solicited.

Volume 34

Papers sought For Research Annual, Research in the Sociology of Health Care published by Emerald Press

The volume will contain 10 to 14 papers, generally between 20 and 35 pages in length. Send completed manuscripts or close to completed papers for review by February 1, 2016. For an initial indication of interest in outlines or abstracts, please contact the same address no later than November 15, 2015. Earlier inquiries are welcome and will be responded to when sent (in the summer, for example). Send as an email to: Jennie Jacobs Kronenfeld, Sociology Program, Sanford School of Social and Family Dynamics, Box 873701, Arizona State University, Tempe, AZ 85287-3701 (phone 480 965-8053; E-mail, Jennie.Kronenfeld@asu.edu). Initial inquiries

by email are encouraged and can occur as soon as this announcement is available.

*Publication and Awards:***Seth Abrutyn**

Mueller, Anna S., Wesley James, Seth Abrutyn, and Martin Levin. 2015. "Suicide Ideation and Bullying Among U.S. Adolescents: Examining the Intersection of Sexual Orientation, Gender, and Race/Ethnicity." *American Journal of Public Health*. 105(5):980-985.

Mueller, Anna S., Seth Abrutyn, and Cynthia Stockton. 2015. "Can Social Ties Be Harmful? Examining the Social Dynamics of Suicide Suggestion in Early Adulthood." *Sociological Perspectives*. 58(2):204-222.

Mueller, Anna S. and Seth Abrutyn. 2015. "Suicidal Disclosures among Friends: Using Social Network Data to Understand Suicide Suggestion." *Journal of Health and Social Behavior*. 56(1):131-148. (Winner of the Best Publication, ASA Section on Mental Health Section, 2015)

Abrutyn, Seth and Anna S. Mueller. 2014. "The Socioemotional Foundations of Suicide: A Microsociological View of Durkheim's Suicide." *Sociological Theory*. 32(4):327-351. (*Winner of the Outstanding Contribution to the Literature, ASA Section on Emotions, 2015*)

Abrutyn, Seth. 2015. "Pollution-Purification Rituals, Cultural Memory, and the Evolution of Religion: How Collective Trauma Shaped Ancient Israel." *American Journal of Cultural Sociology*. 3(1):123-155.

Abrutyn, Seth and Justin Van Ness. 2015. "The Role of Agency in Sociocultural Evolution: Institutional Entrepreneurship as a Force of Structural and Cultural Transformation." *Thesis Eleven*. 127(1):52-77.

Abrutyn, Seth and Anna S. Mueller. 2014. "Are Suicidal Behaviors Contagious in Adolescence?: Using Longitudinal Data to Examine Suicide Suggestion." *American Sociological Review*. 79(2): 211 – 227. (*Winner of the Eliot Freidson Outstanding Publication*

Award, ASA Section on Medical Sociology, 2015 and the Winner of the Outstanding Scholarly Contribution Award, ASA Section on Children and Youth, 2015)

In addition, Seth will receive the University of Memphis' College of Arts and Science's Early Career Research Award.

Dr Martyn Pickersgill, Edinburgh Medical School, has recently been granted a Wellcome Trust Society and Ethics University Award. This 5 year project - titled, *Beyond Diagnosis? Novelty, Need and the Normative in Twenty-First Century Psychiatry* - begins this summer. Martyn was also recently awarded the Henry Duncan Medal for Social Science, from the Royal Society of Edinburgh

Pickersgill, Martyn (2014) *Debating DSM-5: diagnosis and the sociology of critique*. *Journal of Medical Ethics*, 40(8): 521-525 [Special section on 'Responses to DSM-5']

Other News of Interest to Section Members

Beginning August next month, **Callie Burt** has a new job in the Department of Sociology at the University of Washington as an Assistant Professor. Congratulations Callie!!

GRADUATE STUDENTS ON THE MARKET



Ning Hsieh, Ph.D.

University of
Chicago
Department of
Sociology

hsiehn@uchicago.edu

Dissertation Title: "Social Networks, Social Support, and Mental Health in Cross-National Comparative Perspective"

Ning Hsieh is a National Institute on Aging postdoctoral fellow at the University of Chicago. She received her doctoral degree in demography and sociology from the University

of Pennsylvania in 2014. Her research interests include sociology of mental health, global and comparative health, social networks and support, aging, sexuality, and quantitative methods. Her dissertation, entitled "Social Networks, Social Support, and Mental Health in Cross-National Comparative Perspective," has won the 2015 Mental Health Section Dissertation Award at the American Sociological Association. It contributes to the understanding of cross-national disparities in mental health by showing that macro-level political, social, economic, and cultural contexts shape the mental health of populations.

In one chapter of her dissertation (conditionally accepted by the *Journal of Health and Social Behavior*), she examines the factors associated with the disparity in depression between older adults in China and their Russian counterparts, all of whom experienced market reform in the prime of their lives. The study demonstrates that differences in political institutions, political processes, and consequences of market reform lead to unequal access to economic and social resources in the post-reform era; in the case of China and Russia this unequal access has contributed to the current depression gap. Moreover, a more extensive socio-political transformation during market reform, specifically, democratization and a greater disruption of social trust and confidence in government, reduced the health-promoting effects of economic and social resources in Russia. Thus, different effects of these resources on health also explain a significant portion of the depression disparity between China and Russia.

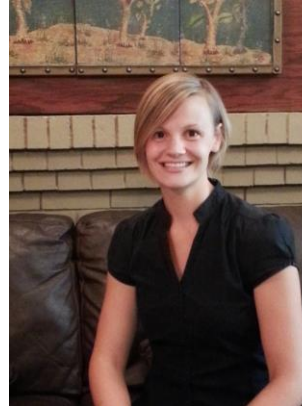
Ning's other research projects explore health disparities by sexual orientation in the U.S., and social isolation, loneliness, and mental/cognitive health among older adults across different national contexts. She has published in *Society and Mental Health*, *Demographic Research*, and *Pacific Economic Review*. Her previous work has received a paper award from the Society for the Study of Social Problems.

**Alex R. Parkhouse**

University of New
Hampshire

Department of
Sociology

Email:
ari89@wildcats.unh
.edu

**Jane S.
VanHeuvelen**

Indiana University

Department of
Sociology

Email:
jdschlap@indiana.
edu

Dissertation Title: "Nobody Wants To Feel Different...But It's Just The Way It Is": Experiences of Stigma and Other Stressors Among People Living with Psoriasis

Brief Statement:

Alex Parkhouse is a sociology PhD candidate at the University of New Hampshire, graduating summer 2015. His research and teaching interests are health and illness, mental health/stress process research, and social stigma. In his work, Parkhouse utilizes quantitative and qualitative research methods to investigate a variety of contemporary health-related issues such as chronic illness, health attitudes and behavior, and health outcomes of stigmatized populations. Under the direction of his chair, Heather A. Turner, Parkhouse's current dissertation research examines stigma and other stressors experienced on a day-to-day basis by people with psoriasis. Findings from this qualitative study based on in-depth interviews and participant observation, highlight the variety of ways that stigma operates in the stress process, including how stigma-related stress proliferates into many domains of daily life (interpersonal and institutional contexts), and how people living with psoriasis manage and cope with stigma and other psoriasis-related stressors. In addition to conducting research on health-related topics, Parkhouse has experience teaching a variety of sociology courses, including: medical sociology; intro to sociology; marriage and family; and deviance.

Dissertation: Practitioners and Practice: Healthcare Workers' Experience of Organizational Change

I am a PhD candidate in the Department of Sociology at Indiana University. My research interests are primarily in the areas of medical sociology, mental health and illness, research methods, social organizations and social psychology. I am interested in bridging theories of practice, status, and social interaction into empirical research of the medical professions. My dissertation examines the fundamental sociological relationship between social structure and individual action. Specifically, I examine how cultures of practice are impacted by radical organizational restructuring. To understand this relationship I analyze longitudinal qualitative and quantitative data gathered at a Neonatal Intensive Care Unit (NICU) as it moved from a traditional open-bay setting to single-patient rooms. The survey data for my dissertation comes from the Teamwork, Clinical Culture and Change in the NICU (T3C) study. My dissertation is divided into three papers, which assess the change at two levels of analysis. First, I examine both the individual beliefs and practices of providers during the unsettled time of organizational change. Second, I shift analysis beyond evaluation of individual providers by assessing organizational change in terms of its effect on interpersonal, relational interactions and collaborations between providers and patients.

In another line of research, my co-author Matthew Grace and I focus on the mental health of healthcare workers. Our paper, "Ties

Received A Test of the Theorized Relationships among Workplace Networks, Social Support, and Mental Health in a Neonatal Intensive Care Unit (NICU)," published in *Society and Mental Health*, tests the relationships among workplace networks, social support, and mental health. Our second paper (in progress) examines professional differences in emotional labor and the internalization of negative emotions in the NICU. Alongside professional group differences, we also examine factors in the organizational environment that may reduce or eliminate professional differences in the internalizing of negative emotions.

I am also dedicated to teaching. I have had the opportunity to teach several courses at the undergraduate and graduate levels, served as the Preparing Future Faculty Fellow, and am gratified that my dedication to teaching has been recognized through my receipt of several teaching awards and fellowships.

MESSAGE FROM THE NEWSLETTER EDITOR

I want to remind everyone that I am always interested in ideas that you have which will improve either the Section's newsletter or website. In this edition of the newsletter, we have a tribute to Lenard Pearlman, there is a listing for all of the ASA sessions for our section and information on mental health related sessions at the Society for the Study of Social Problems, and profiles on several graduate students, or recent graduates, who are on the job market this coming year. I want to thank them for their submissions.

Please take a moment to visit the Section's website. If we have missed your department in our listings of those with a mental health specialization, or if you see other problems with the website, please send me an email and I'll correct the issue as soon as possible. Struther and I have added links to datasets in the Resources directory that might be of interest to sociologists of mental health and illness. Please send me links to datasets that should be included on the webpage.

Finally, I'm looking for submissions about works in progress, preliminary findings, new or emerging research problems, links to

publically available data, emerging issues with Institutional Review Boards, or other topics of interest to members issues. We ask that you keep submissions brief (no more than 500 words).

List of possible contributions:

- Upcoming conferences, calls for papers, special issues of journals or grant opportunities.
- Newly published books by section members.
- Graduate students who are currently on the market and would like to be profiled.
- Congratulatory information.
- Recommendations for classic or new works that should be in the personal library of researchers interested in the sociology of mental illness.
- Short articles on topics that cross boundaries with other sections, such as animal-human interactions and mental health..
- Descriptions of class activities/books/films for use in undergraduate sociology of mental health and illness classes or general tips and strategies for teaching at both the graduate and undergraduate level.

SOCIETY AND MENTAL HEALTH

The Journal of the ASA Section on the Sociology of Mental Health

Editor William R. Avison, The University of Western Ontario
 Deputy Editors Carol S. Aneshensel, UCLA; Carol A. Boyer, Rutgers University; Scott Schieman, University of Toronto
 Editorial Scope of SMH: Society and Mental Health publishes original articles that apply sociological concepts and methods to the understanding of the social origins of mental health and illness, the social consequences for persons with mental illness, and the organization and financing of mental health services and care. Its editorial policy favors manuscripts that advance the sociology of mental health and illness, stimulate further research, inform treatments and policy and reflect the diversity of interests of its readership.

Manuscripts must be submitted electronically at <http://mc.manuscriptcentral.com/smh>

For more information, contact:

Elaine Wethington, Department of Sociology
 G52 MVR
 Cornell University
 Ithaca, New York 14853-4401
 Telephone: (607) 255-2962
 e-mail: ew20@cornell.edu



Richard E. Adams
 Newsletter Editor

Struther Van Horn
 Graduate Student Editor

AMERICAN SOCIOLOGICAL ASSOCIATION

Section on Mental Health
NEWSLETTER STAFF
Richard E. Adams
 Kent State University
 Editor
radams12@kent.edu

Struther Van Horn
 Kent State University
 Student Editor
svanhor2@kent.edu

SECTION OFFICERS

Chair: Jason Schnittker,
 University of Pennsylvania
 Chair
jschnitt@ssc.upenn.edu

Eric Wright, George State
 University
 Secretary-Treasurer
ewright28@gsu.edu

Chair-Elect: Robin Simon,
 Wake Forest University
 Chair-Elect
simonr@wfu.edu

Virginia Aldige Hiday,
 North Carolina State
 University
 Past Chair
ginnie_aldige@ncsu.edu

