

*The College of the Arts  
presents*

# **ART WITHOUT LIMITS**

**OCTOBER 8, 2025**

In-Person at the Kent Campus



College of the Arts

# Ignite CREATIVITY

Four distinguished schools, one internationally recognized museum of fashion and decorative arts, three renowned summer festivals and more.  
Welcome to Kent State University's College of the Arts!

**ART | FASHION | MUSIC | THEATRE AND DANCE**  
Undergraduate | Graduate | Study Away

## KENT BLOSSOM ART PROGRAMS

Kent Blossom Art Intensives | Porthouse Theatre |  
Kent Blossom Music Festival

## KENT STATE UNIVERSITY MUSEUM

## ART WITHOUT LIMITS

A day of Arts Entrepreneurship.  
Join us October 14, 2026.

See the full list of academic programs, concerts, performances and exhibits visit [WWW.KENT.EDU/ARTSCOLLEGE](http://WWW.KENT.EDU/ARTSCOLLEGE)



**KENT  
STATE**  
UNIVERSITY  
—  
College of the Arts

# ART WITHOUT LIMITS

## WELCOME!

Welcome to the Kent State College of the Arts 2025 Art Without Limits event, a day of presentations dedicated to exploring arts entrepreneurship. I am so glad you have joined us today and I hope our speakers further develop your interest in arts entrepreneurship and the impact of the arts in our everyday lives.

I want to extend my sincere appreciation to the inspiring speakers who graciously agreed to participate in today's event, and to the College of the Arts staff, faculty and students who helped organize Art Without Limits and are serving as moderators throughout the day. Thank you to our event partners the John S. and Marlene J. Brinzo Center for Entrepreneurship, the Kent State University Arts Entrepreneurship Student Organization, LaunchNET Kent State and Arts Entrepreneurship Podcast: Making Art Work.

During today's Art Without Limits program, we will announce the winners of our fifth ArtsLAUNCH! Grant Competition. Congratulations to our student finalists!

Finally, we encourage you to continue to engage with the College of the Arts and learn more about our academic programs and events. Please visit us online at

[www.kent.edu/artscollege](http://www.kent.edu/artscollege) or follow us on Facebook, or Instagram at @KentStateArts.

– Diane Petrella, Dean  
Kent State University College of the Arts



# ART WITHOUT LIMITS SCHEDULE

## FEATURED SPEAKERS

TIME	SPEAKER(S)	TOPIC	LOCATION
9 – 9:50 a.m.	<b>Delita Martin,</b> Founder of Black Box Press and Dema Designs	<i>Art</i>	University Auditorium at Cartwright Hall
10 – 10:50 a.m.	<b>Bobby Sanabria ,</b> Performer, Band Leader and Non-profit Director	<i>Music</i>	University Auditorium at Cartwright Hall
11:10 a.m.– 12 p.m.	<b>Aidan Meany,</b> Founder of Found Surface	<i>Fashion</i>	University Auditorium at Cartwright Hall
12 – 12:50 p.m.	<b>Susan Hazel Rich</b> Founder of Hazelmade	<i>VCD</i>	University Auditorium at Cartwright Hall
1 – 1:05 p.m.	<b>ArtsLAUNCH! Awards</b>		University Auditorium at Cartwright Hall
1:05 –1:55 p.m.	<b>Jarryd Huntley,</b> Game Developer	<i>Game Design</i>	University Auditorium at Cartwright Hall
2 – 2:50 p.m.	<b>Larry Heyman,</b> Set Designer	<i>Theatre</i>	University Auditorium at Cartwright Hall
3 – 3:50 p.m.	<b>Leslie Shampaine,</b> Filmmaker and Former Dancer	<i>Dance</i>	University Auditorium at Cartwright Hall
4 – 4:50 p.m.	<b>Lynette Shy,</b> Founder of Confluence Arts Solutions	<i>Marketing and Branding</i>	University Auditorium at Cartwright Hall

**5 - 6 p.m. Join us for a networking reception in the Cartwright Hall Lobby**

**SEE THE CAMPUS MAP**

# **ART WITHOUT LIMITS**

# **HIGH SCHOOL SESSIONS**

## **DISCOVER THEATRE AND DANCE**

- Learn how to make your dance reels dynamic and engaging by selecting clips that highlight your versatility and artistic identity, so you can present yourself as a marketable, professional performer.
- See displays of student, staff and faculty Design, Technology and Production work and learn about opportunities in the school and industry.
- Play games, learn harmony and maybe even do a box set or two with an introduction to acting and theatre.

## **INTERACTIVE MUSIC SESSIONS**

- Play alongside the Kent State Orchestra. The session will include fun repertoire, opportunities to conduct and other engaging activities.
- Learn about creating music for video games, animation and film from a local media composer.
- Attend a presentation of the vibrant efforts in Music Technology, Music Production and Audio Recording taking place in the Music Technology program on Kent's Stark campus.

## **FASHION WORKSHOPS**

- Explore the Kent State University Museum on a tour with insights into career opportunities.
- Hear from fashion student entrepreneurs about their unique businesses as part of Fashion Market.
- Join the Fashion Library in a variety of enjoyable craft activities, including making your own pom-poms.

## **BUSINESS ENTREPRENEURSHIP SHOWCASE**

- Team up to brainstorm creative ventures, guided by entrepreneurship students. From reimagining cities to bringing on social change, participants will pitch their team's idea at the conclusion of the session.

## **LAUNCHNET**

- Create a variety of fun arts and crafts activities while learning about key topics such as branding, pricing, marketing and pitching.

## **GUIDED ART SESSIONS**

- Discover the state-of-the-art Center for Visual Arts with guided tours of our studios.
- Learn about stone setting techniques, learn the basics of sculpting a head and bust in clay, screenprint on a tote or make a piece of art in the ArtTech Studio.
- Learn how to generate revenue streams from public and private commissions.
- Hear from professors on the intersection of art history and museum work.

## **GAME DESIGN DEMONSTRATIONS**

- See works by students, faculty and alumni from Kent State's Animation Game Design program, including animated shorts, computer games, and tabletop games.

## **VISUAL COMMUNICATION DESIGN**

- Work together to create a growing gallery installation with Pantone-inspired collages.
- Learn how to bring shape-making into your illustrations and capitalize on gestural form as you learn to design characters for the comic book industry.
- Collaborate on an animation project while applying the process of rotoscoping. Using simple, everyday tools, participants will transform live-action movement into expressive animated frames.
- See how a comic page is made using traditional and digital materials. Learn about layout, composition, storytelling and media exploration.

# ART WITHOUT LIMITS SPONSORS

Art Without Limits is presented in partnership with LaunchNET Kent State, the John S. and Marlene J. Brinzo Center for Entrepreneurship, Kent State University's Arts Entrepreneurship Student Organization, and Arts Entrepreneurship Podcast: Making Art Work.



John S. and  
Marlene J. Brinzo  
Center for  
Entrepreneurship

LaunchNET

KENT STATE UNIVERSITY

POWERED BY BURTON D. MORGAN FOUNDATION



John S. and Marlene J. Brinzo Center for Entrepreneurship  
[www.kent.edu/business/brinzo-center](http://www.kent.edu/business/brinzo-center)

LaunchNet Kent State  
[www.kent.edu/launchnet](http://www.kent.edu/launchnet)

Arts Entrepreneurship Student Organization  
[www.instagram.com/aeso\\_ksu](http://www.instagram.com/aeso_ksu)

Arts Entrepreneurship Podcast: Making Art Work  
[www.artsentrepreneurshippodcast.com/](http://www.artsentrepreneurshippodcast.com/)



# ART WITHOUT LIMITS SPEAKERS



## LARRY HEYMAN Theatre

Larry Heyman is an internationally recognized and award-winning freelance designer based in Cleveland. He is a USA Local 829 Scenic Designer, with over thirty years' experience in set design as well as properties design, fabrication and supervision, across theatre, film, television, commercial projects and higher education.

He is also an author and has created classes, completed research and worked extensively in higher education classrooms and performance spaces. He has lectured

and written extensively about all aspects of design and production, encompassing script analysis, paperwork, organization, research, sourcing, procurement and fabrication. Larry thrives on creative problem-solving, budgeting, and design and fabrication.

His design method is director-focused and searches for terms, metaphors and visual motifs that may often seem remote, but create a unique outside-the-box perspective for actors and audiences alike.

He has a diverse portfolio of design work, ranging from opera, theatre, film, commercial work and trade events.

Larry is also known for developing a new, low-cost, non-staining, non-fiber reactive stage blood recipe used in theaters nationwide. His recipe was included in Jennifer McClure's book, *Bloody Brilliant: How to Develop, Execute, and Clean Up Blood Effects for Live Performance*, as well as an article in a professional publication.

Affiliated companies: The Goodman Theatre, The Huntington Theatre, the LaJolla Playhouse, Prague Shakespeare Company, The Cleveland Playhouse, Kaleidoscope Productions, Paramount Pictures Corp., Twentieth Century Fox, MTV and Touchstone Pictures. .



## JARRYD HUNTLEY Game Design

Jarryd Huntley is a Sr. Lead Optimization Engineer at Owlchemy Labs working on *Dimensional Double Shift*. As a leader in Cleveland's game dev scene he's taught classes and workshops, organized numerous events, and also co-author of the 2017 book *Game Programming for Artists*. Jarryd was lead programmer on the 2023 Peabody Award-winning game *We are OFK*, he was also inducted into the Video Game Awards Future Class 2021. With talks worldwide, he brings a unique perspective by drawing on his experiences from

enterprise software engineering to playing as a professional musician. His studio, Polytundra, has ported games to consoles and released its own title *Art Club Challenge* which was featured in the 2017 Smithsonian American Art Museum Arcade.

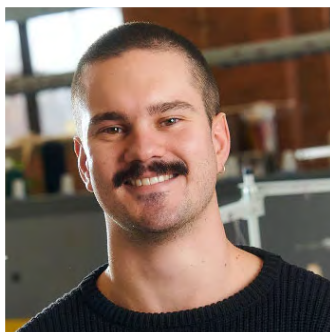
# ART WITHOUT LIMITS SPEAKERS



## DELITA MARTIN Art

Delita Martin (b. 1972, Conroe, TX) is an artist and activist based in Huffman, Texas. A multidisciplinary creator who draws, sews, collages and paints on paper, Martin often depicts Black women whose stories have historically been omitted from Western art. Combining modern and traditional materials and imagery, Martin constructs images inspired by her personal history in order to generate new narratives and challenge societal norms.

Martin received a BFA in drawing from Texas Southern University and an MFA in printmaking from Purdue University, and previously taught drawing at the University of Arkansas at Little Rock. In 2020, she launched the Black Box Press Foundation, dedicated to supporting artists whose work inspires activism and social change. Martin's work has been exhibited nationally and internationally and is held in numerous private and public collections, including the Museum of Fine Arts, Houston; Bradbury Art Museum, Arkansas; Gorman Museum, California; Crystal Bridges Museum, Arkansas; David Driskell Center, Library of Congress, Washington, D.C.; Minneapolis Institute of Art, Minnesota; Minnesota Museum of American Art; and National Museum of Women in the Arts, Washington, D.C., among others.. Her work *The Gathering*, was commissioned for the Moody Center for the Art's tent series in 2021 and is now part of the Rice Public Art collection.



## AIDAN MEANY Fashion

Aidan Meany is the founder and CEO of Found Surface, a Cleveland-based factory specializing in apparel and soft goods. Aidan leads the company's innovation in digital knitting, blending technology with traditional craftsmanship to create high quality and sustainable goods. Found Surface partners with Rust Belt Riders to compost factory waste and is actively bringing commercial natural dye to market. The company is also pursuing the production of regional animal fiber at scale in partnership with Jordan Masters at West

Virginia University. Aidan's focus on transparency and collaboration positions Found Surface as a leader in responsible American production. Found Surface is a one-stop-shop for clients looking to design, develop, and produce their soft goods sustainably in the USA.



# ART WITHOUT LIMITS SPEAKERS



## SUSAN HAZEL RICH Visual Communication Design

Susan Hazel Rich is a business owner, designer and illustrator. In 2014, she transitioned from a graphic design career to developing her own brand, Hazelmade, a stationery and home goods line of small-batch, USA / Midwest-made products that are both quality and beautiful works of art made to last. Hazelmade has thousands of retail customers and is carried in more than 600 stores worldwide. Susan has been recognized as a top designer within her field by local and national organizations, received the

prestigious “40 Under 40” award for leadership, and remains committed to her community through mentoring, teaching and volunteering her professional skills.



## BOBBY SANABRIA Music

A graduate of the Berklee College of Music, drummer, percussionist, composer, arranger, documentary film producer, activist, radio host, writer, and multi-Grammy nominated as a leader, Bobby Sanabria is a native Nuyorican son of the South Bronx. His versatility as both a drummer and percussionist from small group to big band has become legendary. He’s performed and recorded with every major figure in the history of Latin jazz, jazz, and salsa, with such legends as Dizzy Gillespie, Tito Puente, Mongo

Santamaria, Eddie Palmieri, Paquito D’Rivera, Candido, Charles McPherson, Larry Harlow, Ruben Blades, Celia Cruz, and the Father of Afro-Cuban jazz, Mario Bauzá as his drummer for 9 years touring and recording on his major Grammy nominated albums. He is the leader of Quarteto Aché, Sexteto Ibiano, Ascensión, and his Multiverse Big Band. His big band albums have all been nominated for Grammys for a total of nine, including Afro-Cuban Dream: Live & In Clave!!!, Big Band Urban FolkTales, Multiverse (double Grammy nominated), and West Side Story Reimagined which was awarded the Jazz Journalists Record of the Year Award for 2019 and hailed as a masterpiece by the Wall Street Journal, as well as Kenya Revisited Live!!! and Tito Puente Masterworks Live!!!, with Bobby conducting the Manhattan School of Music Afro-Cuban Jazz Orchestra, including his most recent Grammy nomination for VOX HUMANA with his Multiverse Big Band for the 2024 Grammys. DRUM! Magazine named him Percussionist of the Year (2005); he was named Percussionist of the Year by the Jazz Journalists Association in 2011 and 2013. He has been named one of the top ten percussionists in the world by the readers and critics of Downbeat magazine for the last 10 years and is a member of Max Roach’s legendary percussion ensemble M’BOOM. Mr. Sanabria has composed the music for several award winning, critically acclaimed documentaries - From Mambo to Hip Hip: A South Bronx Tale (2006) where he was also a producer, consultant and on air personality, Some Girls (2017),

# ART WITHOUT LIMITS SPEAKERS

and *La Madrina: The Savage Life of Lorraine Padilla* (2020). Other documentaries he has been featured in on screen and acted as a consultant, producer are, *The Palladium: Where Mambo Was King* (2003), *Latin Music U.S.A.* (2006), *We Like It Like That: The Story of Latin Boogaloo* (2015), and *Let's Get The Rhythm* (2016). In 2012 Maestro Sanabria was selected by legendary jazz pianist Herbie Hancock to represent Latin jazz with his *Quarteto Ache'* as part of the first Annual UNESCO International Day of Jazz at the United Nations

Among his numerous awards include induction into the 2006 Bronx Walk of Fame, the 2018 Jazz Education Network's LeJENS of Latin Jazz Award and being honored by his name being read into the U.S. Congressional Record by Congressman Dennis Kucinich of Ohio in 2008. In 2019 he was named Godfather/Padrino of the National Puerto Rican Day Parade in New York City. He was recently bestowed an Honorary Doctorate by Lehman College in New York. He is on the faculty of New School University (his 28th year), is the Co-Artistic Director of the Bronx Music Heritage Center/Bronx Music Hall, and is the host of the Latin Jazz Cruise on WBGO FM, America's leading jazz station. His lifetime dedication to spreading the history, culture, of jazz and Latin jazz to the general public as a performer, as well as educating a new generation of players, composers, arrangers, has no parallel. His latest critically acclaimed double CD with his Multiverse Big Band, *VOX HUMANA*, recorded live at Dizzy's, NYC features vocalists Janis Siegel, Antoinette Montague and Jennifer Jade Ledesna and was nominated for a Grammy for Best Latin Jazz recording (2024).



## LESLIE SHAMPAINÉ Dance

Leslie Shampaine is an award-winning filmmaker and teaching artist. After a 13-year career as a professional ballet dancer, she transitioned into documentary film, producing content for PBS, CBS, Discovery Channel and National Geographic. She was part of the production team for the Emmy-winning Kennedy Center Honors, creating over 30 biographical films about American artists.

Her PBS feature documentary, *Call Me Dancer*, has won 24 prestigious awards, including China's top documentary prize. The film was shown in over 90 film festivals, on airlines, in cinemas and screened at U.S. consulates in India and Nepal.

As a 2024 Fulbright Scholar to India, she led workshops and screenings, using the universal language of art to foster cross-cultural dialogue. Her dedication to the arts continues to inspire global connections, bridging cultures and fostering understanding through storytelling and mentorship.

Selected credits include the PBS programs: *One World: India*, *Avoiding Armageddon* and *Closer To Truth*; *Who Betrayed Anne Frank* (Discovery Channel) – winner of a Telly, a Cine Golden Eagle, and a Gold Remi at the Houston WorldFest; *DC Cupcakes* (TLC); Smithsonian Networks series' *Seriously Amazing Objects*; and *Fireworks*, with George Plimpton (A&E), which was nominated for an Emmy and an ACE

# ART WITHOUT LIMITS SPEAKERS



## LYNETTE SHY MARKETING AND BRANDING

Lynette Shy is the founder of Confluence Arts Solutions, a marketing agency built specifically for small and midsize arts organizations. With over two decades of experience in arts marketing, Lynette specializes in helping artists and arts administrators grow their audiences, increase revenue and build systems that actually work. She's known for her practical, people-first approach to strategy and has worked with organizations across the country on everything

from ticket sales to digital campaigns. Lynette is also a frequent speaker on the future of arts. Selected credits include the PBS programs: One World: India, Avoiding Armageddon and Closer To Truth; Who Betrayed Anne Frank (Discovery Channel) – winner of a Telly, a Cine Golden Eagle, and a Gold Remi at the Houston WorldFest; DC Cupcakes (TLC); Smithsonian Networks series' Seriously Amazing Objects; and Fireworks, with George Plimpton (A&E), which was nominated for an Emmy and an ACE

# ART WITHOUT LIMITS THANK YOU

*Art Without Limits would like to extend gratitude to the following who helped to make this event possible.*

## **College of the Arts:**

Dean Diane Petrella

Associate Dean Kim Hahn

Sarah Labovitz, Director, School of Music

Tony Hardin, Director, School of Theatre and Dance

Mourad Krifa, Director, School of Fashion

Jillian Sokso, Director, School of Art

Sarah Spinner Liska, Director,  
Kent State University Museum

Jen Crabtree, Marketing, Communications  
and PR Director

Madi Getz, Marketing and  
Communications Specialist

Elise Miller, Student Marketing Assistant

Allison Smith-Hernandez, Associate Director,  
Advancement and External Relations

Taryn McMahon, Associate Professor,  
School of Art

Eric Black, Recruitment Coordinator

Pam Hutson, Coordinator of Operations  
and Special Projects

Tisha Bogovich, Senior Resource Manager

Linda Colby, Business Manager

Donna Laverne, Business Manager

Evie Sabolek-Smith, Business Manager

Brian Gardner, Information Technology  
Team Leader

Matt Marquis, Information Technology Manager

David Cooper, Senior Information Technology  
User Support Analyst

Arts Entrepreneurship Student Organization

All the students who are displaying art and  
performing at Art Without Limits

## **College of Communication and Information, School of Visual Communication Design:**

Daniel Alenquer, Director

Christina Campbell, Special Assistant

Candice Harris, Student Recruitment  
Project Coordinator

## **Ambassador Crawford College of Business and Entrepreneurship:**

Shawn Rohlin, Ph.D., Professor of Economics,  
Director of the Brinzo Center for Entrepreneurship

Linda Hale, Manager of the John S. and Marlene  
J. Brinzo Center for Entrepreneurship

Nick Petrella, Entrepreneur-In-Residence,  
John S. and Marlene J. Brinzo Center for  
Entrepreneurship; Assistant Professor,  
College of the Arts

## **LaunchNET Kent State:**

Zach Mikrut, Director

Danielle Flemister, Assistant Director

## **Presentation Moderators:**

Daniel Alenquer

Ambre Emory-Maier

Gennie Neuman Lambert

Kendra Lapolla

Taryn McMahon

Mark Nowakowski

Nick Petrella

Chris Totten



# ART WITHOUT LIMITS THANK YOU

## **Art Without Limit Event Planning Committees:**

Nick Petrella, Event Chair

## **Selection Committee:**

Daniel Alenquer, VCD

Ambre Emory-Maier, Dance

Suyeon Ko, Music

Gennie Neuman Lambert, Theatre

Kendra Lapolla, Fashion

Taryn McMahon, Art

Mark Nowakowski, Music

Nick Petrella, Arts Entrepreneurship

Chris Totten, Animation/Game Design

Anderson Turner, Art

## **Marketing**

Jen Crabtree

Madi Getz

Elise Miller

## **Reception**

Allison Smith-Hernandez

## **Student Displays**

Allison Smith-Hernandez

Anderson Turner

## **High School Activities**

Eric Black

Matt Cola

Candice Harris

Nick Petrella

## **A/V and IT**

David Cooper

Brian Gardner

Matt Marquis

## **Registration and Surveys**

Eric Black

Joe Giffen

Ellen Kratky

Allison Smith-Hernandez

## **Contracts and Hospitality**

Pam Hutson

Evie Sabolek-Smith

## **Venue Reservations and Catering**

Janet Carnahan

Natalie Dolezal

Tessie Shipley

# ArtsLAUNCH!

Research and creative activity are vital for the advancement of any discipline, and to encourage new and innovative ideas in the arts and arts entrepreneurship. Kent State University College of the Arts, in partnership with the **John S. and Marlene J. Brinzo Center for Entrepreneurship** and **LaunchNET**, established ArtsLAUNCH! in late 2021. This annual grant competition is designed to promote new art and new arts ventures that will positively impact the arts economy.

***LEARN MORE ABOUT ARTSLAUNCH!***

## **2026 ArtsLAUNCH! Grant Competition Judges:**

Jane Chu, Artist, Business Woman, Philanthropist

Brian and Michael Raitman, Co-Founders of Raitman Art Galleries in Breckenridge and Vail, CO

***2026 ArtsLAUNCH! finalists and winners will be announced at 1 p.m.***



# EXHIBITIONS & EVENTS GUIDE

Fall 2025



## GALLERIES

**PROBLEM CHILD BY JAMIE WALTERS KESSLER**

AUG. 22 - SEPT. 27 | KSU DOWNTOWN GALLERY

Reception. Aug. 22 at 5 p.m.

**THE ART OF SEEING: REFLECTIONS ON ART THROUGH POETRY**

A COLLABORATION BETWEEN THE SCHOOL OF ART COLLECTION AND GALLERIES & THE WICK POETRY CENTER

AUG. 26 - OCT. 8 | CVA GALLERY

Reception. Aug. 29 at 5 p.m.

**AGGREGATE III: AVALANCHE OF TALENT EXHIBITION**

OCT. 10- NOV. 29 | KSU DOWNTOWN GALLERY

Reception. Oct. 10 at 5 p.m.

**RASHAYLA MARIE BROWN**

THE CURLEE RAVEN HOLTON & RAVEN FINE ART EDITIONS

DISTINGUISHED ART FELLOWSHIP

OCT. 30- NOV. 25 | CVA GALLERY

Reception: Oct. 30, 4-6 p.m. with an artist talk at 6 p.m.



## EVENTS

**FRIDAY LECTURE: SCOTT ANDREW**

PERFORMATIVE BODIES

SEPT. 12, 2025 AT 12 P.M | CVA ROOM 165

**FRIDAY LECTURE: LINDSAY FULLERTON**

SOURCING THE EPHEMERAL CITY AT CHICAGO'S 1933-34 A CENTURY OF PROGRESS WORLD'S FAIR

OCT. 26, 2025 AT 12 P.M | CVA ROOM 165

**FRIDAY LECTURE: DELITA MARTIN**

VISUALIZING THE INVISIBLE

OCT. 10, 2025 AT 12 P.M | CVA ROOM 165

**FRIDAY LECTURE: POPPY DELTA DAWN**

WEAVING TRANSGRESSIONS

NOV. 7, 2025 AT 12 P.M | CVA ROOM 165

**FRIDAY LECTURE: ALLISON K. YOUNG**

THE HARBINGER IS HOME: AMBIVALENCE AND ACCOUNTABILITY FOR PROSPECT NEW ORLEANS'S LOCAL COMMUNITY

NOV. 14, 2025 AT 12 P.M | CVA ROOM 165

**ANNUAL HOLIDAY SALE**

DEC. 5 - 6, 2024 | CVA GALLERY

11 a.m. - 4 p.m.

KENT STATE UNIVERSITY SCHOOL OF MUSIC

# CONCERT GUIDE

*Fall 2025*

**Sept. 21 | 6 p.m.**

Orchestra Concert  
Hometown Bank Plaza,  
Downtown Kent ^

**Oct. 9 | 7:30 p.m.\***

Jazz Orchestra with guest  
Bobby Sanabria  
Ludwig Recital Hall

**Oct. 12 | 5 p.m.\***

Kent Keyboard Series  
Ludwig Recital Hall

**Oct. 14 | 7:30 p.m.\***

Wind Ensemble/Symphony  
Band Concert  
The University Auditorium,  
Cartwright Hall

**Oct. 17 | 7:30 p.m.\***

Roy Minoff Award Concert  
Ludwig Recital Hall

**Oct. 19 | 3 p.m.\***

Kent State Choirs Concert  
The University Auditorium,  
Cartwright Hall

**Oct. 20 | 7:30 p.m.\***

Jazz Concert with  
Miguel Zenon  
Ludwig Recital Hall

**Oct. 23 | 7 p.m.**

No Exit New Music Concert  
Ludwig Recital Hall

**Oct. 30 | 7:30 p.m.\***

Percussion Ensemble Concert  
C106, Center for the Performing Arts

**Nov. 6 | 7:30 p.m.\***

Nova Jazz Concert  
Ludwig Recital Hall

**Nov. 7 | 7:30 p.m.\***

Wind Ensemble Concert  
The University Auditorium,  
Cartwright Hall

**Nov. 12 | 6 p.m.**

Concerto Competition Finals  
Ludwig Recital Hall

**Nov. 16 | 3 p.m.**

Youth Orchestra Concert  
The University Auditorium,  
Cartwright Hall

**Nov. 16 | 5 p.m.\***

Kent Keyboard Series  
Ludwig Recital Hall

**Nov. 20 | 7:30 p.m.**

Steelband Concert  
C106, Center for the Performing Arts

**Nov. 22 | 7:30 p.m.\***

New Music Ensemble  
Ludwig Recital Hall

**Nov. 24 | 7:30 p.m.\***

Jazz Studies Large Ensemble  
Ludwig Recital Hall

**Nov. 25 | 7:30 p.m.\***

Jazz Studies Combo Concert  
Ludwig Recital Hall

**Dec. 2 | 7:30 p.m.\***

University Band/  
Symphony Band Concert  
The University Auditorium,  
Cartwright Hall

**Dec. 4 | 7 p.m.**

Progressive & Vernacular  
Music Methods Performance  
Rathskeller

**Dec. 4 | 7:30 p.m.\***

Gospel Choir Concert  
The University Auditorium,  
Cartwright Hall

**Dec. 5 | 7:30 p.m.\***

Wind Ensemble Concert  
The University Auditorium,  
Cartwright Hall

**Dec. 7 | 3 p.m.\***

Kent State Choirs &  
Orchestra Concert  
The University Auditorium,  
Cartwright Hall

**Dec. 14 | 3 p.m.**

Kent State Youth  
Winds Concert  
Ludwig Recital Hall

\* Ticketed event

**Ticketing Information**

Tickets may be purchased in any one of the following ways:  
in-person at the Box Office, over the phone, online or at the  
door, unless otherwise indicated.

**Phone:** 330-672-2787 **Email:** pabo@kent.edu

**GET TICKETS**

# THE SCHOOL OF THEATRE AND DANCE

2025-2026 SEASON



By Leah Nanako Winkler

**SEPT. 25-OCT. 1, 2025**

Wright-Curtis Theatre



RODGERS & HAMMERSTEIN'S

**OCT. 24-NOV. 2, 2025**

E. Turner Stump Theatre



**NOV. 21-23, 2025**

E. Turner Stump Theatre



Book by Karey Kirkpatrick & John O'Farrell

Music & Lyrics by Wayne Kirkpatrick & Karey Kirkpatrick

Conceived by Karey Kirkpatrick & Wayne Kirkpatrick

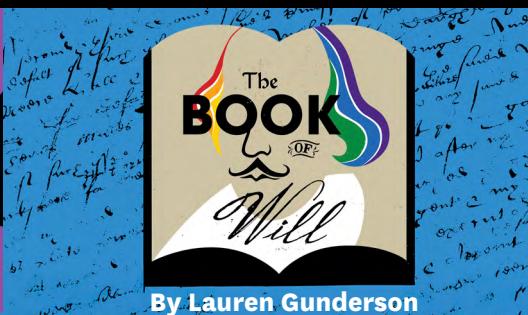
**FEB. 20-MAR. 1, 2026**

E. Turner Stump Theatre



**MAR. 27-28, 2026**

E. Turner Stump Theatre



By Lauren Gunderson

**APRIL 17-26 2026**

Wright-Curtis Theatre

**GET TICKETS**

Phone: 330-672-2787

Email: [pabo@kent.edu](mailto:pabo@kent.edu)

[KENT.EDU/THEATREDANCE](http://KENT.EDU/THEATREDANCE)

**KENT STATE**  
UNIVERSITY

School of  
Theatre and Dance

College of the Arts



# TRANSFORM LIVES THROUGH THE *Arts*

Your support for the College of the Arts empowers our students to transform the world and lead as innovators and global changemakers advancing creative and collaborative culture.

**SUPPORT THE COLLEGE  
OF THE ARTS**

**KENT STATE**  
UNIVERSITY

College of the Arts

## 2026 FASHION WEEK

SAVE THE DATE | APRIL 20-26

The **Kent State School of Fashion Annual Fashion Show** is the pinnacle of the senior year experience and takes place during our Fashion Week, **April 20-26**. Our fashion students plan and organize this three-day event every April as an opportunity to celebrate their achievements.

Pictured: Best in Show by Caroline Hill,  
B.F.A. Collection 2025



**LEARN ABOUT  
FASHION WEEK**

**KENT STATE**  
UNIVERSITY

School of Fashion

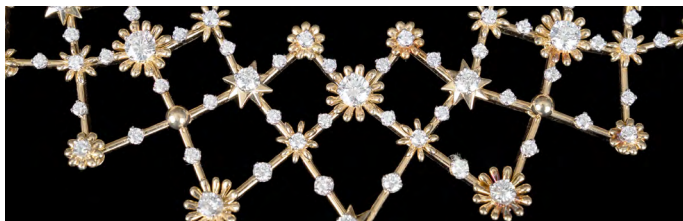


# KSU MUSEUM

## Museum Hours

**Tuesday - Saturday:**  
11 a.m. - 5 p.m.

**Sunday:**  
12 - 4 p.m.



## SPARKLE: THE STYLE AND JEWELRY OF AILEEN MEHLE EXHIBITION

**through August 23, 2026**

In honor of the Kent State University Museum's 40th anniversary, this exhibition pays tribute to Aileen Mehle, a friend of the museum founders and widely syndicated society columnist.

*Sponsored by Linda Harper, Leslie Resnick, and Karen and Ken Conley with a sustainability grant from the Ohio Arts Council*



## A MEETING OF CULTURES: FASHIONING NORTH AFRICA

**through May 10, 2026**

The exhibition "A Meeting of Cultures: Fashioning North Africa" will be the first of its kind in the world to focus specifically on contemporary fashion designers and influencers in Morocco, Algeria, Tunisia, Libya and Egypt.

*Sponsored by Linda Harper, the Louise H. and David S. Ingalls Foundation and by DutchCultureUSA, a program of the Kingdom of the Netherlands in the United States with a sustainability grant from the Ohio Arts Council*



## LEROY NEIMAN: A KEEN OBSERVER OF STYLE

**October 24, 2025 through June 28, 2026**

Featuring 85 illustrations — many on public view for the first time — the exhibition spans Neiman's work from the 1950s through the 1990s and includes garments from the artist's personal wardrobe.

*Organized in partnership with the LeRoy Neiman and Janet Byrne Neiman Foundation with a sustainability grant from the Ohio Arts Council*

## Free admission for students

515 Hilltop Drive  
Kent, Ohio 44242

330-672-3450

[www.kent.edu/museum](http://www.kent.edu/museum)



— THE KSU —  
MUSEUM

# *Visit Us Online*

College of the Arts

***WWW.KENT.EDU/ARTSCOLLEGE***

School of Art

***WWW.KENT.EDU/ART***

School of Fashion

***WWW.KENT.EDU/FASHION***

School of Music

***WWW.KENT.EDU/MUSIC***

School of Theatre and Dance

***WWW.KENT.EDU/THEATREDANCE***

Kent State University Museum

***WWW.KENT.EDU/MUSEUM***

## **STAY CONNECTED!**

Update your contact information to receive up-to-date information on College of the Arts news and events.

**UPDATE YOUR CONTACT INFO**

